



DuPont™
MONTELLI®
DECO SURFACE



DuPont™ Montelli® Solid Surface is a highly practical and stylish decorative material, which can be used in a variety of applications in both commercial and residential sectors such as for wall panels, coffee tables, reception desks, kitchen countertops, bathroom vanities and shower surrounds.

A composite product, DuPont™ Montelli® is produced by a continuous casting process, meeting strict quality control standards. It is supplied in sheet form. Because the material is solid and homogenous, the surface is durable, non-porous, hygienic and repairable. These performance benefits make DuPont™ Montelli® a suitable material for areas subject to very heavy use and easy to work with.

DuPont™ Montelli® series can be cut, routed, thermoformed, joined with inconspicuous seams, sanded and engraved to create a wide variety of design opportunities.

Decorative surface DuPont™ Montelli® is available in 21 shades - 21 different aesthetic sensations originating from Italian landscape, history, architecture and cities, which inspired our developers to create a sophisticated texture and tone, relevant to the historical architectural and design traditions of Italy.



MARMOLADA | 701
12mm



AMALFI | 937
12mm



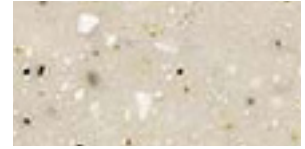
BELLAGIO | 964
12mm



CARRARA | 4805
12mm



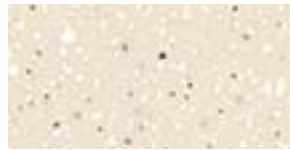
CORTINA | 4301
12mm



PADOVA | 4804
12mm



MILANO | 773
12mm



MURANO | 4212
12mm



SANREMO | 749
12mm



SIRACUSA | 4300
12mm



PALERMO | 935
12mm



SORRENTO | 748
12mm



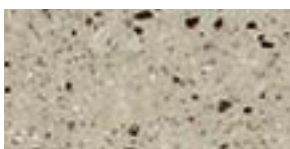
PORTOFINO | 963
12mm



RAVENNA | 4803
12mm



SIENA | 961
12mm



POMPEI | 4801
12mm



TAORMINA | 772
12mm



CAPRI | 4800
12mm



ISCHIA | 4806
12mm



VESUVIO | 4802
12mm



ETNA | 944
12mm

Composition and Materials:

DuPont™ Montelli® Ultra is composed of Acrylic (PMMA) and Aluminium Trihydrate (ATH) mineral filler.

Fabrication & Installation:

DuPont™ Montelli® Ultra can be cut to size, routed, thermoformed, joined using inconspicuous seams and sanded. It should be fabricated and installed according to the recognized guidelines of the solid surface industry in Europe.

Typical Performance Properties of DuPont™ Montelli® Ultra Sheets:

Property	Result	Unit	Testing method	*
Density	1,752	g/cm ³	UNE-EN ISO 1183-1	1
Flexural strength	64,8	MPa	UNE-EN ISO 178	1
Flexural modulus	9220	MPa	UNE-EN ISO 178	1
Deflection at flexural strength	0,89	%	UNE-EN ISO 178	1
Compressive strength	122	MPa	UNE-EN ISO 604	1
Deformation at break	4,7	%	UNE-EN ISO 605	1
Tensile strength	41,8	MPa	UNE-EN ISO 527-2	1
Elongation at break	0,69	%	UNE-EN ISO 527-2	1
Load test	no cracks /no breaks	deflection less than 0,25 mm	ISO 19172-2 clause 7	1
Impact resistance (large-diameter ball drop)	no breaks	imprint <10mm /no breaks	ISO 19172-2 clause 8	1
Lighthfastness (Xenon Arc)	Rating 5*	Rating 3* requirement	ISO 19172-2 clause 9	1
Stain/ chemical resistance	Rating 4/5*	Rating 3* requirement	ISO 19172-2 clause 10.1-2	1
Resistance to cigarette burns	Rating 4*	Rating 3* requirement	ISO 19172-2 clause 11	1
Resistance to dry heat (180° C)	Rating 5*	Rating 3* requirement	ISO 19172-2 clause 12	1
Resistance to wet heat	Rating 4*	Rating 3* requirement	ISO 19172-2 clause 13	1
Hot/cold cycle water resistance heat	no failure		ISO 19172-2 clause 14	1
Hardness (barcol)	70+/-3		ISO 19172-2 clause 15	1
Hardness (ball)	290+/-20	N/mm ²	ISO 19172-2 clause 15	1
Hardness (Rockwell)	92+/-1		ISO 19172-2 clause 15	1
Dimensional stability (humidity (90+/-3)%RH))	0,05	%	ISO 4586-2 clause 11	1
Dimensional stability (humidity (15+/-5)%RH))	0,03	%	ISO 4586-2 clause 11	1
Resistance to immersion in boiling water	Rating 5* no visible change	increase < 2%, shine min rating 4*	ISO 4586-2 clause 7	1
Resistance to surface wear	0,02	% weight in variation for each rev	ISO 4586-2 clause 6	1
Hardness of surface (Mohs index)	2-3		DIN EN 101	5
Slip resistance with 120 µm grit	Passes R9 Requirement		DIN 51130	5
Slip resistance with 150 µm grit	Passes R9 Requirement		DIN 51130	5
Fire classification	Euroclass B-s1,do		DIN EN 13501-1:2002	2
Reaction to fire	Class M2		NF P 92-501	3
Smoke opacity and gas toxicity	Class Fo		NF F 16-101	4

* Rating 5: no visible change

* Rating 4: minor change of shine and/or colour-only visible at certain angles of view

* Rating 3: moderate change of shine and/or colour

* Rating 2: distinct change of shine and/or colour

* Rating 1: surface damage and/or blistering

(1) Test report AT-0325/12 from Aimplas 11-2011

(2) Classification Report 11690C from Warringtonfiregent – Belgium/08-2005

(3) Classification Report 11890-04 from SME/Group SMPE – France/10-2004

(4) Classification Report 11924-04 from SME/Group SMPE – France/11-2004

(5) Test Report Q IWQ MBL 734 1109-1 from LGA – Germany/04-2004

For more information about DuPont™ Montelli®, please call:

+359 889 924181 Albania, Bulgaria, Kosovo, Macedonia
 0800 29 58 33 Austria
 0800 96 666 Belgium
 +381 11 20 90 580 Bosnia & Herzegovina, Montenegro, Serbia
 +386 41 37 00 31 Croatia, Slovenia
 +30 210 6889700 Cyprus, Greece
 +971 4 4285606 Cyprus, Jordan, Lebanon
 +420 25 74 14 213 Czech Republic, Slovakia
 +20100 0107 421 Egypt, Malta, North Africa
 0800 91 72 72 France
 0800 18 10 018 Germany
 +36 30 39 67 312 Hungary
 1800 55 32 52 Ireland
 800 87 67 50 Italy
 800 23 079 Luxemburg

0800 02 23 500 Netherlands
 +46 31 60 73 70 Nordic Countries
 +48 22 32 00 900 Poland
 +351 22 75 36 900 Portugal
 +40 31 62 04 100 Romania
 +7 495 79 72 200 Russia, Kazakhstan
 +966554724448 Saudi Arabia, Yemen
 +27 82 797 9078 South Africa
 901 12 00 89 Spain
 0800 55 46 14 Switzerland
 +90 212 340 04 00 Turkey, Israël, Caucasus Countries, North Iraq and North Cyprus
 +971 50 4521511 UAE, Qatar, Bahrain, Kuwait, Oman
 +38 044 498 90 00 Ukraine, Belorussia, Moldova
 0800 96 21 16 United Kingdom



The miracles of science™

